

FIXED ASSETS

PRODUCT OVERVIEW

MODULE FEATURES

HIGHLIGHTS

CALCULATES DEPRECIATION

BETTER ASSET MANAGEMENT

TRACK MISSING ASSETS

BARCODE SCANNER FOR EASY COUNTS

MULTIPLE SETS OF BOOKS

EXPENSE PROJECTION REPORTING

INTERFACES WITH CRYSTAL

The Fixed Asset module is used primarily to track fixed assets enterprise wide and to calculate monthly or annual depreciation amounts. Many customers use this module for the sole purpose of satisfying annual physical fixed asset count requirements. Geneva also offers the AssetDL system that allows users to scan barcoded fixed asset tags and download the counts to Quantum. This module is also integrated with General Ledger and Accounts Payable.

Asset Master records

The Asset Master record consists of two main screens that include fields for asset number, description, purchase order number, check number, vendor,

acquisition date, depreciation method, location, division, room number, condition and many more.

The screenshot displays two overlapping windows from the 'Asset Maintenance' software. The top window shows the 'Change' screen for Asset No. 06340, with fields for Division (01), Location (28), G/L Code (1), and Category (19). The bottom window shows the 'Asset Entities' screen for the same asset, detailing depreciation parameters such as 'Straight Line' method, 'Modified Half-Yr' acquisition convention, and a cost basis of 1,876.00.

ADVANTAGES

- Increase Productivity
- Easy Transfer of Assets from Accounts Payable
- Your existing Data can probably be converted
- Design your own Fixed Asset Registers

ASSETDL BARCODE SCANNING

Our customers have a responsibility of counting their fixed assets at least one time each year. Someone in these organizations is tasked with the job to travel from site to site and note the asset numbers in each room and then manually update Quantum asset tables. This is not an easy process.

Geneva has developed an add-on module to Fixed Assets that automates this process. This solution is called AssetDL.

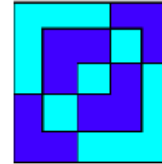
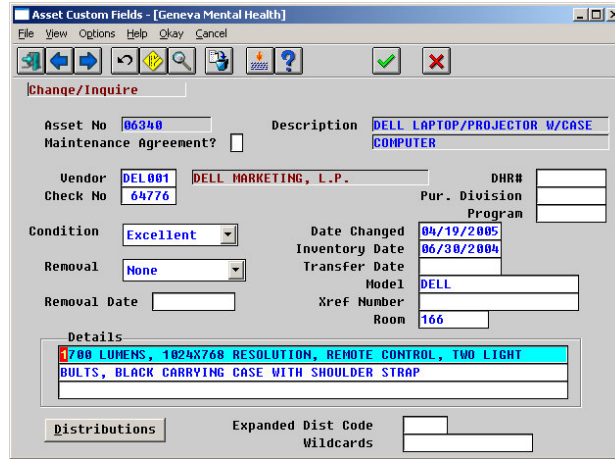
This solution uses a Symbol barcode scanner to collect Asset numbers by location and room number.



Once all of the assets have been scanned this information is easily downloaded to Quantum. The system can then provide an up-to-date inventory list as well as movement history reports and missing asset registers.

CUSTOMIZED FIELDS

Geneva has converted data from many legacy systems to the Quantum Fixed Asset module. In the event where an organization needs to track a unique piece of information (ie, DHR number or extensive description and notes related to the Asset), Geneva has added that field to the Quantum tables.



Ogeechee Behavioral MH

Geneva converted Ogeechee's fixed asset data from an IBM AS400

DEPRECIATION CALCULATIONS

Quantum can depreciate fixed assets using various methods including straight line depreciation, declining balance, sum of years digits, units of production and accelerated cost recovery method. Straight Line is the method of choice for Mental and Behavioral Healthcare organizations.

Quantum also accommodates several different types

of acquisition conventions including current period, half year, next period, modified half year, and more. This helps ensure that the correct depreciation amount will be calculated regardless of when the asset was put into service.

The system allows users to preview monthly or annual depreciation calculations and then post them to the main

asset tables. The system can post expenses for an asset to a single G/L account number or spread the expense amount over any number of accounts across programs and cost centers.

These distributions are interfaced to Quantum's General Ledger along with the other subledger transactions from accounts payable, payroll, and accounts receivable.

Geneva has experience converting Fixed Asset data from spreadsheets, Access tables and CMHC files. Chances are we can convert your data too.

MORE FEATURES

Asset Registers

Quantum comes standard with several Fixed Asset Register reports. Users can print this information by location, by G/L code or category. Many clients create their own Fixed Asset register using Crystal Reports. This information can be downloaded into spreadsheets.

Asset Movement History

Quantum tracks each move an asset makes through your organization. Users can print reports showing assets moving from location to location from room to room for any range of dates.

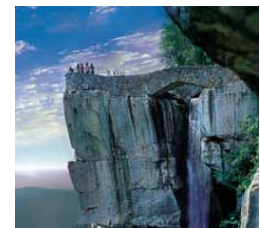
Asset Dispositions

Quantum allows users to

associate disposition codes to assets when they are abandoned, sold off, traded in or involuntarily converted.

Asset Keyword Lookup

Users can easily locate asset records by typing in any keyword of the asset description, vendor, category, model number or location name.



Lookout Mountain Community Service Board in Georgia had Geneva convert their CMHC Fixed Asset data saving over 250 man-hours of manual entry