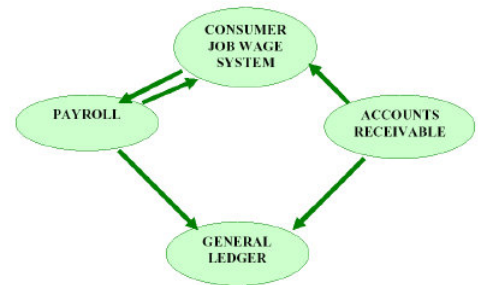


CONSUMER JOB WAGE

PRODUCT OVERVIEW

BACKGROUND

Geneva created this module to address the needs of customers with MR/DD centers. We found that there was a need to have a Consumer/Client payroll system that was integrated with General Ledger, Accounts Receivable and Payroll. The Consumer Job Wage module handles both piece rate and hourly rate operations and complies with the Department of Labor requirements for “rounding up” Consumer hourly rates.



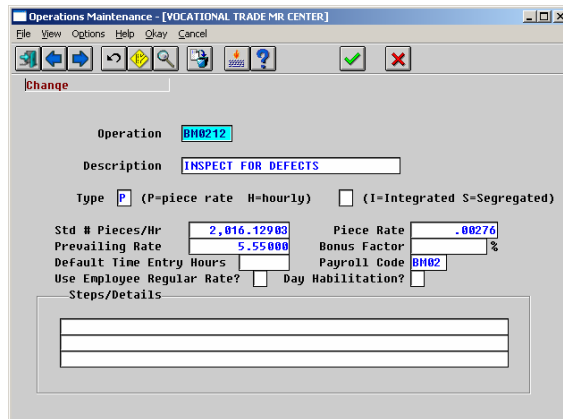
This module allows users to define paid and non-paid operations as necessary for tracking and paying clients. The system allows entry of Consumer Time Studies, tracks prevailing rates and calculates each client’s commensurate rate based on the operation they performed. Users can print invoices, enter payments and track receivables using Aging reports and even Geneva’s Collections module (if necessary).

CONSUMER OPERATIONS

Each MR/DD Center has a variety of different operations consumers perform based on the nature of the contracts with local communities and businesses. Quantum allows users to define an unlimited number of operations and default certain values that make time entry more efficient. The system tracks both hourly rate and piece rate opera-

tions. The hourly rate codes allow entry of a “prevailing rate”. Quantum uses that rate to calculate the Con-

sumer’s commensurate rate using the person’s Productivity Percentage in his/her time study for that operation. Users can define an unlimited number of operations and track an unlimited number of time studies for each consumer.



BENEFITS

EFFICIENT ENTRY OF TIME RECORDS

INTEGRATED WITH GENERAL LEDGER

EASY TO KEEP TIME STUDIES CURRENT

FLEXIBLE

EASY TO USE

USER-DEFINED REPORTS WITH CRYSTAL

FULL ACCOUNTS RECEIVABLE PROCESSING

SPECIAL FEATURES

- Consumer Time Study Expiration Tracking
- Integrated and Segregated Reports
- Define Work Teams
- Detail and Summary Production Reports
- Actual Payroll Checks and End-of-Year 1099 Forms

TIME STUDIES

The Consumer Job Wage module supports the use of Time Studies for hourly rate operations. The system tracks the date of the consumer's last wage review for each operation as well as the time study's expiration date. Users enter the "Productivity Percentage" from the actual time studies and the system calculates the Consumer's Commensurate during Time Entry. Users can print a Wage Study Expiration list for any operation, any consumer, for any range of dates. This helps users be pro-active in tracking time studies instead of re-active to expired wage reviews. If a Time Study has

expired, the time entry system will display an appropriate message and continue on using the Prevailing rate for the operation being entered. All rates carry out to five decimal places to ensure accuracy to the frac-

tion of the penny. Quantum also has an excellent history and audit trail capabilities so each time transaction can be retraced and verified at any time.

"The creation of this module is another example of Geneva's strategy to deliver fully integrated solutions to our customers. We prefer a 'one-source-one-responsibility' relationship with our customers. By using our Consumer Job Wage system users are already familiar with Quantum screens, business processes and reports. It just made sense."

Tom Vincent, President
Geneva Software



CONSUMER TIME ENTRY

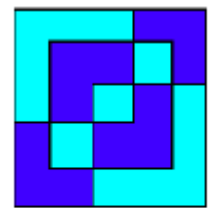
Project	Operation	Hours	Pieces	Rate	Pay-Amt
A	LU	.50			
A	CHOT	.50		.63	.32
A	HI2101	2.00	300	2.07	2.07
A	BH1102	5.00	462	1.86	1.86

modates an unlimited number of entries so time sheets can be daily, weekly or even just monthly – all depending on your organization's business rules and preferences.

activities. The Time Entry screen can also use a default hours from the operation setup screen as well as the Consumer's default hourly rate – based on the nature of the work or operation.

Consumer time is entered, edited and then posted to the Quantum Payroll module where Consumer Checks are printed. The system accom-

The Time Entry edit list shows each consumer time entry, the calculated pay for each operation and the number of hours. These entries can be for paid as well as non-paid



Ogeechee
Behavioral MH

Ogeechee Behavioral Health Services has been using the Consumer Job Wage system since 1999.

INTEGRATED WITH PAYROLL

The consumer job wage system uses the Quantum payroll module for check disbursement and historical pay check tracking. Consumers can be exempt from taxes if need be. Organizations can either print W2 forms or 1099 forms for Consumers at the end of the year. Consumers can even have their pay deposited automatically through direct deposits.

The Consumer payroll data can be stored in an entirely



different set of data tables than your agency's main database. This keeps the Con-

sumers separated from your regular employees. Quantum can be setup to interface the Consumer Payroll Distributions to the General Ledger of the main agency's books.

By using the payroll system our users have more flexibility and power for tracking consumer checks, voiding checks, reprinting checks and printing standard payroll reports.

CONSUMER JOB WAGE REPORTS

Quantum comes standard with the reports considered necessary to run and properly operate your MR/DD work center. These reports include Consumer Listing, Birthday Listings, Operations Listings, Time Study Expiration Reports, Work Crew lists, Time Entry Edit Lists, Posted Time Entry reports, Production Reports by Project, Integrated Production Reports, Segregated Production Reports, Time History Reports, Pay Check History Reports, etc. Users can also design their own reports, if they like, using Crystal.



Demonstrations of Quantum can be delivered through webex at your convenience

Customer Contracts:

Quantum allows users to define and track Contracts with community organizations and business. These contracts can be valid for a specific range of dates and help organize the A/R billing and invoicing process.

Cash Receipts:

Quantum's A/R module is used to enter cash receipts from community organizations that are invoiced for services and products. The system produces a detail and summary A/R aging report to show uncollected invoices.

Invoice Printing:

Geneva can modify the invoice printing program to print on your organization's letter head or existing invoice stock.